



SIGNATURE  
PROPERTY PARTNERS



## Acacia Road, Leytonstone

Offers Over £500,000

🛏️ 4 🍽️ 4 🛋️ 2

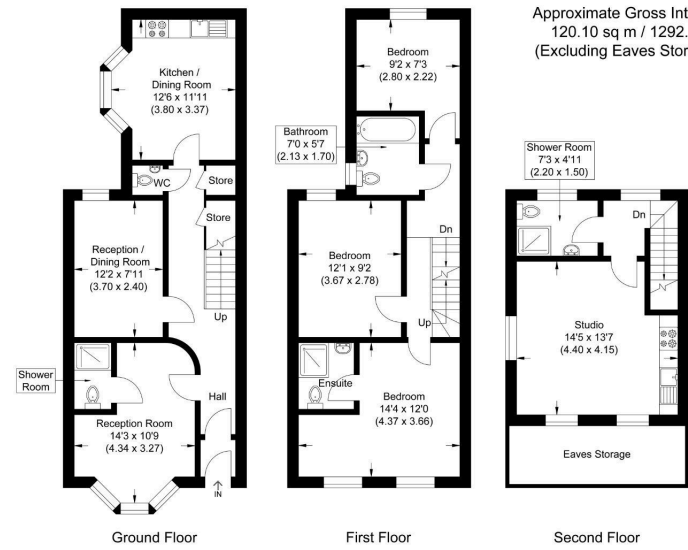
- End of terrace Victorian house
- With HMO renting six rooms
- Sold chain free
- Great rental investment



Offers in excess of £500,000. A charming three-bedroom, with additional bedroom in the loft, end-of-terrace Victorian house in Leytonstone. Currently rented as an HMO and in liveable condition, this property offers an excellent opportunity for a renovation project to create a beautiful family home. The house has two reception rooms downstairs, two downstairs WC's and a well-appointed kitchen. The first floor features three bedrooms, two bathrooms including one en-suite, on the second floor you have an additional bedroom and another bathroom. This property is ideal for families, with the outstanding Jenny Hammond Primary School and Acacia Nursery School nearby. It's perfect for those who love spending time outdoors. Additionally, the property benefits from excellent transport links, with Maryland Overground station close by and convenient connections to Stratford, Leyton, and Leytonstone Underground stations. Quote ref DM008







Approximate Gross Internal Area  
120.10 sq m / 1292.74 sq ft  
(Excluding Eaves Storage Area)

Illustration for identification purposes only, measurements are approximate, not to scale.

